

EPS Electronic Paper Signage

adopt large screen e-Paper 32/42 inch

Pre-installed EPS application

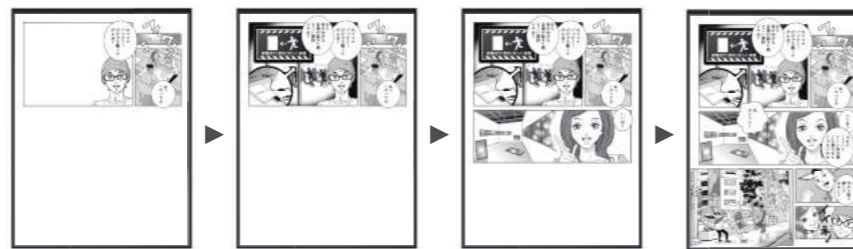
It is an app for signage and can be used immediately after purchase. If you use the EPS application, you can easily switch to a slide show or HDMI connection that automatically switches the screen. In addition, PC software is also available for creating / editing slide data. (PC / Mac)



Various playback modes

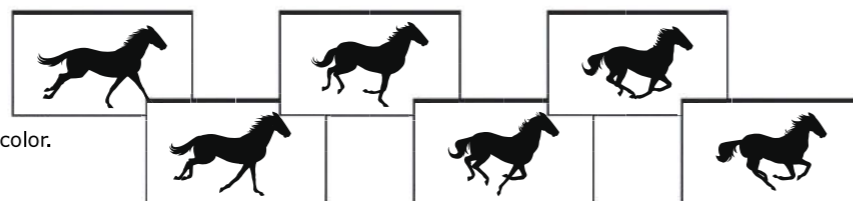
Partial rewrite mode

Only part of the image can be rewritten. The picture on the right is a depiction of an anime manga using this function.



Fast rewrite mode

You can play video like flip cartoons and stop motion animation with quick rewrite in 0.1 sec increments.



*In this mode, it's not in 16 gray scale but black and white 2 color.

Specification	C06-EPS42-2	C07-EPS32-2	
Display	Display size	42inch	31.2inch
	Resolution	2016×2880 pixel	2560×1440 pixel
	Display	E-Paper (E-Ink made)	
	Grayscale	16 level	
Interface	Surface	Anti-glare	
	Image input	HDMI×1	
	USB	USB 2.0 (Host)×1 (for Mouse, Keyboard, USB memory-stick) USB 2.0 (device)×1 (for PC connection)	
	Various interface	SD card-slot (Max32GB)×1	
Power	Net work connection	RJ-45×1 (LAN connector)	
	Output	Φ3.5mm×1 Stereo mini-jack	
	Input Voltage	AC 100-240V, 50/60Hz	
	External Batteries	Battery connection terminal	
Size	W×H×D / Weight	W658×H880×D33mm / 7.4Kg	W704×H441×D33mm / 4.5Kg
	Mounting hole (back side)	200mm×200mm VESA std.	200mm×400mm VESA std.
Environmental Conditions	Operation temp.	0~50°C (E-Paper spec.)	
Accessory	AC adapter, setup guide (incl. warranty)		

※ The product appearance and specifications are subject to change without notice for improvement.



Easy to read even under the sun



Ultra low current consumption



Eye friendly



Wide viewing angle



24 hours display OK

EPS brand site

Click here for more information on EPS video and introductory manga and so on.



CREA Co.,Ltd

5F Kanda Park Plaza, 2-2-2 Kaji-cho, Chiyoda-ku, Tokyo 101-0044 JAPAN TEL: +81(0)3-6206-8582 e-Mail: info@crea2007.co.jp



Electronic Paper Signage



EPS

Electronic Paper Signage
adopt large screen e-Paper 32/42 inch

- Ultra Low Power
- easy display with HDMI
- Signage app pre-install
- Slim bezel
- Display even no power

HDMI USB LAN RJ-45

First device with HDMI as EPD signage



EPS Electronic Paper Signage

adopt large screen e-Paper 32/42 inch

- Ultra Low Power
- easy display with HDMI
- Signage app pre-install
- Slim bezel
- Display even no power

CREA EPS (Electronic Paper Signage) is first device with HDMI terminal as EPD for signage. Image input is easy with the same operation as the conventional LCD type displays. In addition to high image quality and high visibility, electronic paper can maintain display even without a power supply, so it can display with very low power consumption.



First device with HDMI as EPD signage

Available with solar power and battery

Since there is no backlight, power consumption during operation can be greatly reduced. By using solar power and battery, it can be operated even in places where power is difficult to obtain, such as bus stops.



There is no need for power installation because it can be battery operated

Use Case ▶

An 8-hour slideshow operation is possible with a 3000 mAh mobile battery. (* When switching the display every 10 seconds) Ideal for outdoor events where power can not be prepared.

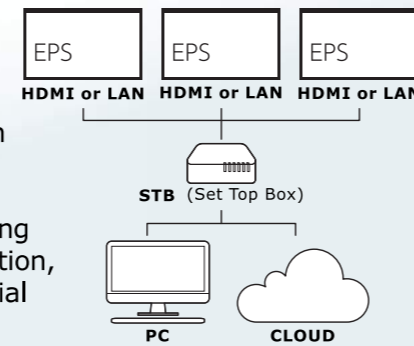


Equiped with HDMI and LAN

It supports HDMI and LAN connection, so diverting the current delivery system as it is. Data distribution with wireless possible by connecting wireless LAN repeater and also possible to build a new distribution system.

◀ Use Case

Since electronic paper does not require backlighting, it can reduce power consumption. The running cost can be significantly reduced when using multiple units such as at a station, airport, or in a large commercial facility.



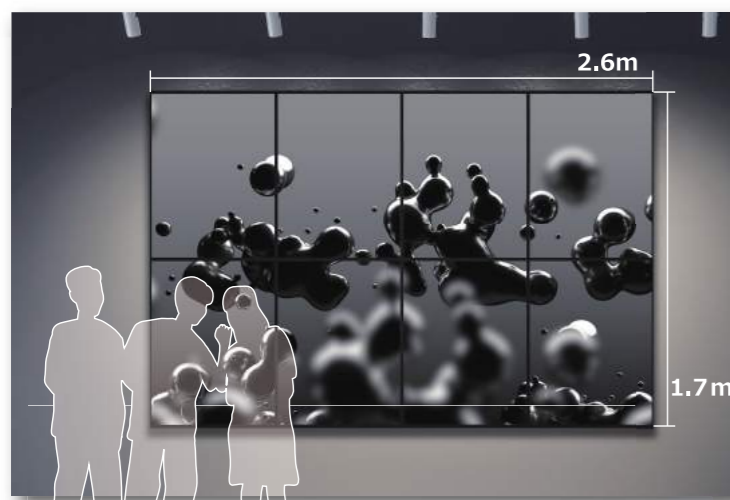
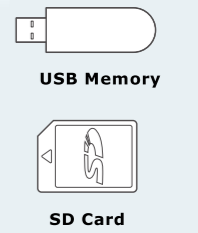
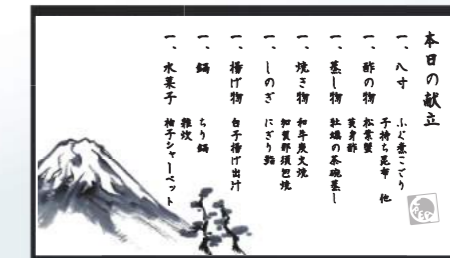
possible to use the existing system and also multiple data distribution.



Slideshow without connecting PC or playback device

Stand-alone operation without playback equipment

There is no need for special playback equipment. If the image prepared, you can use it immediately. easily edit the slideshow playback and display schedule of the images stored in the SD card or USB memory with the pre-installed signage application. Therefore switching the content easily without specialist, such as changing the cafe menu.



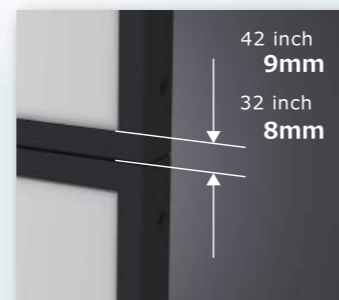
narrow bezel does not impair the content image

Slim bezel, lightweight design

Because the bezel is slim, you can view large images without compromising the image. A big powerful image is expressed. It weighs 42 inches by 7.4 kg and 32 inches by 4.5 kg.

◀ Use Case

By using 42 inches in 2 rows and 4 columns, large view of 2.6 m x 1.7 m can be expressed with more than 8K image quality. In addition, since there is no light emission from the panel, it is possible to display a calm atmosphere in harmony with the surrounding space.



E-paper can maintain the displayed contents without supplying power

Keep displaying even power failure

Electronic paper can keep display contents even without power supply, unlike other display devices. Therefore, it is possible to display disaster prevention information such as evacuation instructions even at the time of a power failure or disaster.

◀ Use Case

Normally used as signboards and information boards for station, airports, large commercial facilities, etc., when disasters such as earthquakes and fires with blackouts occur, switch to disaster prevention and evacuation guidance information. After that, the display is maintained even without power supply.

