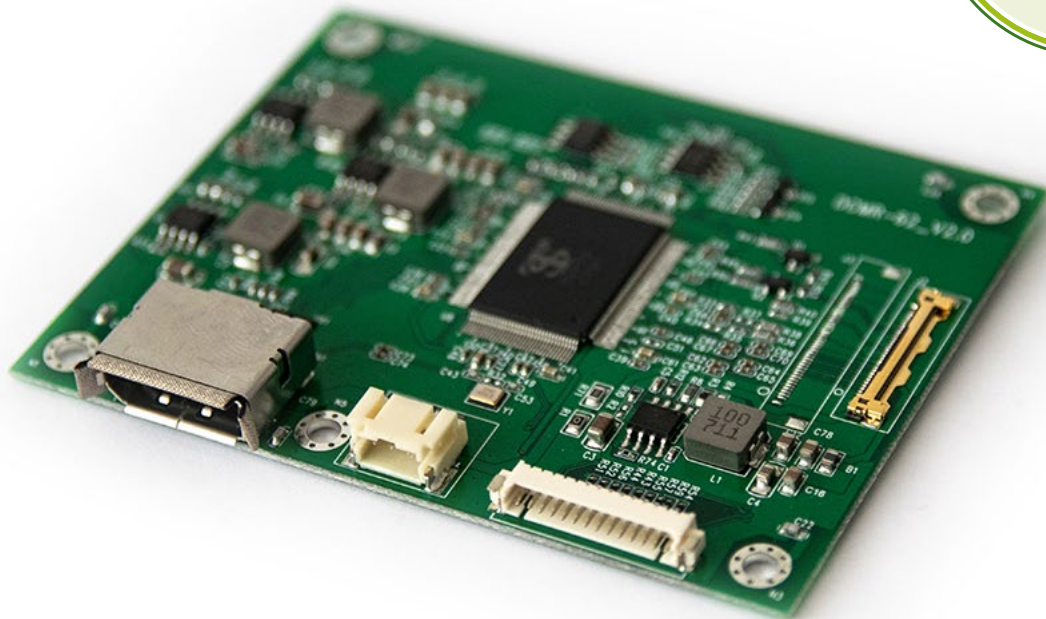


# DCMR-62

LCD-Controller



[DCMR-62](#) is a DisplayPort to embedded DisplayPort converter board which accepts standard DisplayPort 1.2 (5.4GHz, HBR2) and all backward compatible signals. It generates all necessary control signals and panel data to drive eDP-TFT-LCDs and supports resolutions up to 1920x1200 (WUXGA) at a vertical refresh rate up to 60Hz. The user interface includes brightness, contrast adjustment, etc. by on-screen programming. Several OSD functions can be managed via embedded I<sup>2</sup>C- or DDC/CI-interface.

## FEATURES

- MCCS via DDC/CI
- I<sup>2</sup>C control interface
- HDCP support
- Independent color management (ICM)
- Image Adaptive Power Savings (IAPS)
- Standard 30-pin or 40-pin eDP connector
- Cost-effective



BECK GMBH & CO. ELEKTRONIK BAUELEMENTE KG  
ELTERSDFORFER STR. 7 | 90425 NUREMBERG  
PHONE +49 911 93408-0 | [INFO@BECK-ELEKTRONIK.DE](mailto:INFO@BECK-ELEKTRONIK.DE) | [WWW.BECK-ELEKTRONIK.DE](http://WWW.BECK-ELEKTRONIK.DE)

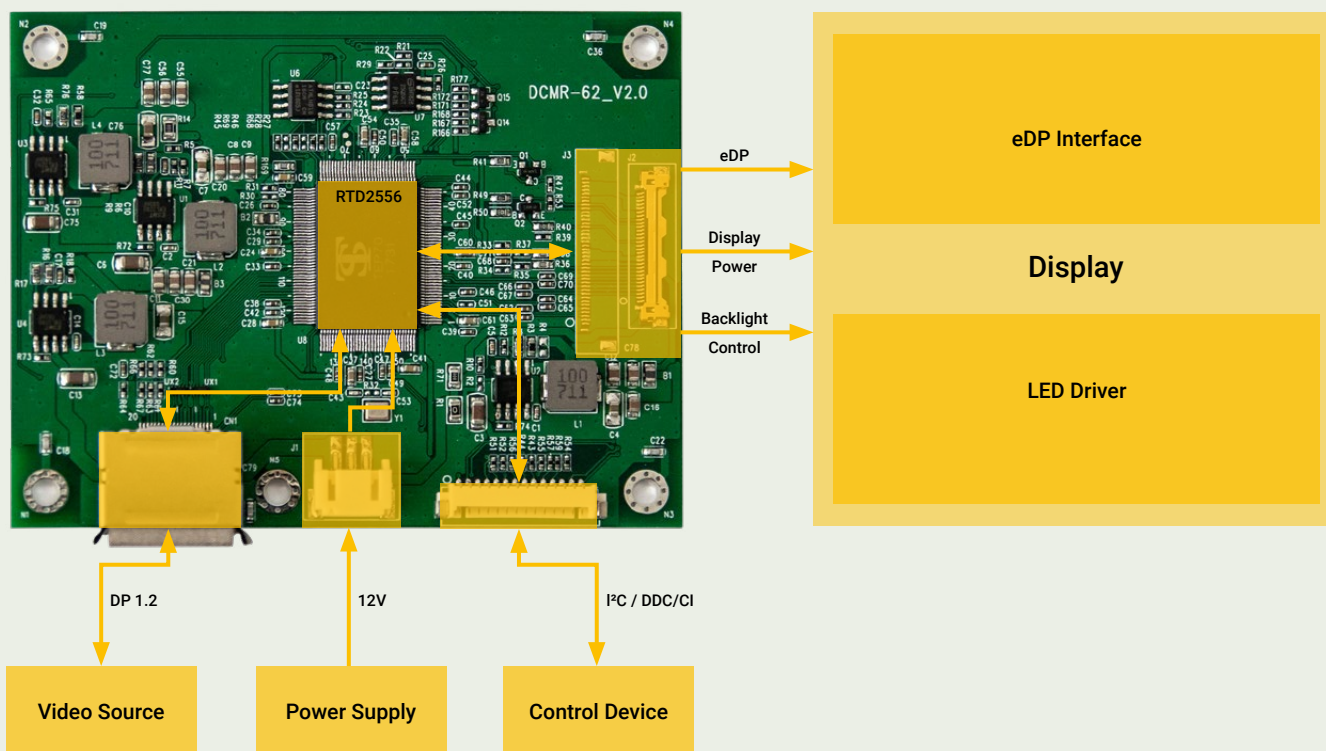
TECHNICAL SUPPORT & CONTACT INFORMATION  
FOR MORE INFORMATION, CUSTOMIZED ADAPTIONS  
AND NEW DESIGNS PLEASE [VISIT OUR WEBSITE](#)

# TECHNICAL SPECIFICATIONS

INPUT INTERFACE	DisplayPort 1.2
OUTPUT INTERFACE	eDP (Embedded DisplayPort) HBR
MAX. RESOLUTION	1920 x 1200 pixels (WUXGA)
POWER SUPPLY	12V/DC
POWER CONSUMPTION	1.5W
DIMENSIONS	90mm x 70mm x 9mm (W x D x H)
WEIGHT	27g
OPERATING TEMPERATURE	0°C .. 70°C

## TYPICAL APPLICATION

A typical application in an industrial environment is shown in the following figure:



## ACCESSOIRES

PART NO.	NAME	DESCRIPTION
188-00330	Power supply 12V, 5A, 2,5 x 5,5 x 11mm	Power supply 60W (12V/DC, 5A)
188-00125	EPAS-OSD1 SMD LED	5-button keypad incl. bi-color R/G SMD LED
188-00490	OSC-MT-250	Cable for OSD-keypad
188-02250	PWR-DCMR44-100	Adapter cable DCMR-62 to DC jack 2.5mm x 5mm

